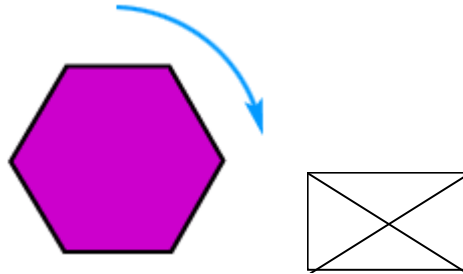


Chapter 11 - Angles

clockwise

In the same direction in which the hands of a clock move

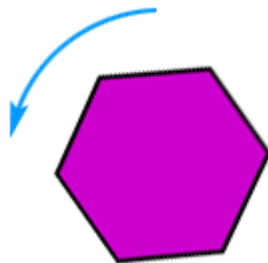
Example:



counterclockwise

In the opposite direction in which the hands of a clock move

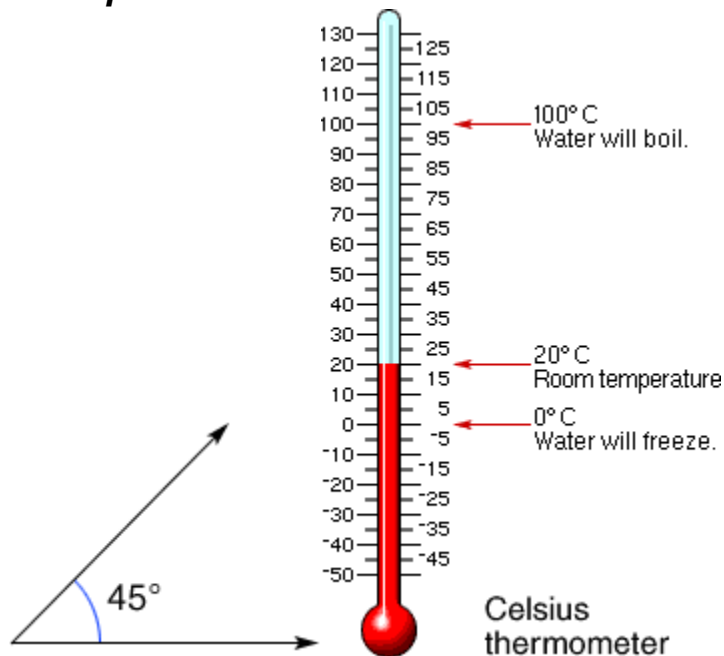
Example:



degree (°)

The unit used for measuring [angles](#) and temperatures.

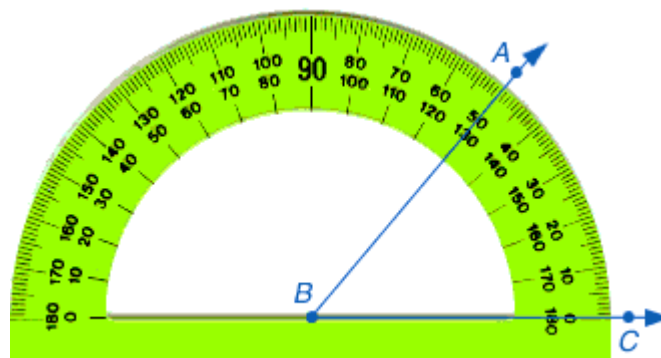
Examples:



protractor

A tool for measuring the size of an angle

Example:



ray

A part of a line; it has one endpoint and continues without end in one direction.

Example:



vertex

The point at which two rays of an angle meet, or two (or more) line segments meet in a plane figure, or where three or more edges meet in a solid figure; the top point of a cone.

Examples:

